



Hello,  
New  
Dental  
Care.

The Combined Power of Electrons and Sonic Waves.  
Discover the Future of Brushing.



RHYTHM  
2  
ELECTRIC SOLAR TOOTHBRUSH



# NEW Experience a refreshing cleanse like no other!

Removes plaque using sonic waves and electrons.

## 〈 Sonic Vibrations and Two Types of Electrons 〉

The effective powers of electrons and high-speed sonic vibrations combine to remove stubborn plaque and cavity-causing bacteria. Watch as your teeth become smooth and squeaky clean thanks to technology that is easier, faster and more reliable than conventional brushing.

Stop *S. Mutans* bacteria before it can multiply.

■ Test for the elimination of *S. Mutans* (cavity-causing bacteria)



Based on a study by the Boken Quality Evaluation Institute  
After soaking SOLADEY and a conventional toothbrush in an *S. Mutans*-bacteria solution for 3 minutes, we cultivated the acquired bacteria for 48 hours in an agar medium. Upon comparison, SOLADEY was found to have significantly inhibited the *S. Mutans* bacteria's reproduction.

Equipped with Two Modes of Sonic Vibration

## 〈 High Mode-approx. 22,000 vibrations/min, Standard Mode-approx.18,000 vibrations/min 〉

Press the button once for Standard mode (18,000 vibrations/min) and twice for High (22,000 vibrations/min). Select the mode that best matches your brushing strength and the sensitivity of your teeth and gums.

Watch as electrons are generated in real time.

## 〈 HOTARU (firefly) Lamp 〉

The blinking LED light glows like a firefly to indicate the generation of electrons. Witness the chemical actions firsthand and enjoy a fun and easy way to check the progress of your brushing each day.  
\*During brushing

Patented in 15 countries

SOLADEY RHYTHM 2



○ SNOW WHITE    ● ICE BLUE    ● BABY PINK  
JAN 4964859005943    4964859005929    4964859005936

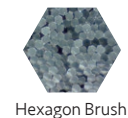


Image figure

Improved brushing performance in each and every bristle.

## 〈 Honeycomb-Point Bristles 〉

The honeycomb-shaped (hexagon) bristles deliver a thorough and satisfying polish every time, while the pointed brush tip cleans deep between teeth and around the molars. As an added feature, a combination of binchotan (white) charcoal and silver ions\* work to keep the brush impeccably clean even when idle.



Hexagon Brush



Silver Ions\*



Kishu Binchotan Charcoal

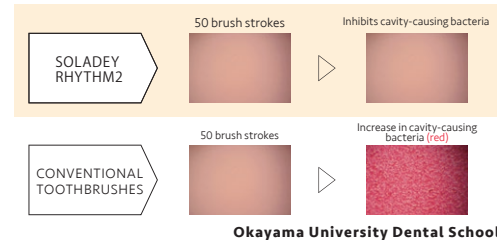
\*Due to antibiotic compounds

Fight off cavity-causing bacteria throughout the night.

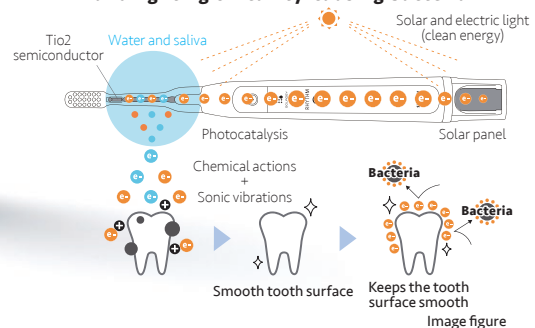
## 〈 Photocatalyst + Solar Panel 〉

Efficiently removes plaque by emitting two types of electrons. The electrons coat the teeth entirely, ensuring they remain sparkly clean even 12 hours after brushing. We have also added a third solar panel for an extra power boost.

## Comparison of cavity-causing bacteria adhering to the teeth after 12 hours



## Mechanisms for removing plaque and fighting off cavity-causing bacteria



## Specs

Brush		Body	
Body material	Acrylic Resin	Colors	Snow White, Ice Blue, Baby Pink
Bristle material	Nylon	Total length	221mm    Maximum diameter 22.6mm
Bristle hardness	Regular	Weight	approx. 50g (without battery)
Heat resistance temperature	60°C	Power supply	one AAA alkaline battery (sold separately)
*Spare brush For use on all SOLADEY brushes.		Approximate usage times	
● AAA Alkaline Dry-Cell Battery		2 minutes per use/ Approx. 120 uses (240 min)	
● Special stand included		Vibration frequency (Brushstroke)	
*Do not use if you have a pacemaker or defibrillator.		High Mode Approx. 22,000 vibrations/min Standard Mode Approx. 18,000 vibrations/min	
*Works with all spare brush heads from the SOLADEY Series.			

〈Research & Development and Sales Agency〉 SHIKEN Co., Ltd. 2-5-6, Teradacho, Tennoji-ku, Osaka 543-0045, Japan  
〈Contact us Toll-free〉 +81-6-6774-0051 +81-6-6772-6945 〈Hours〉 9 a.m. to 5 p.m. (Closed on weekends and public holidays)

<https://www.kk-shiken.co.jp/soladeyrhythm2/en>





# Fight off cavity-causing bacteria throughout the night.



## ● Even after 12 hours there is still no sign of cavity-causing bacteria!

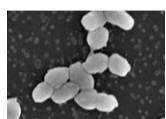
Okayama University Dental School



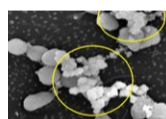
## ● Attack periodontal disease-causing bacteria!

Kanagawa Dental University

■ Test for the elimination of P. Gingivalis (periodontal disease-causing bacteria)



Living periodontal disease-causing bacteria



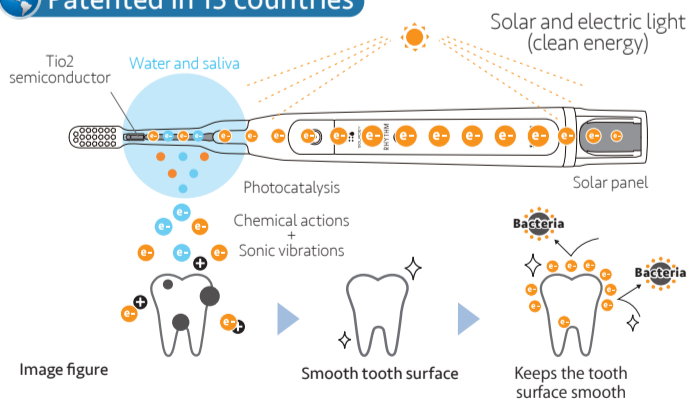
Ruptured periodontal disease-causing bacteria

【Details】

Upon testing the brush's efficacy in eliminating P. Gingivalis, it was found that the bacteria had been ruptured and were no longer active.

## ● Mechanisms for removing plaque and fighting off cavity-causing bacteria

Patented in 15 countries



○ SNOW WHITE

JAN 4964859005943

● ICE BLUE

JAN 4964859005929

● BABY PINK

JAN 4964859005936

### Universities Collaborating in Joint Research

• Okayama University Dental School • The Nippon Dental University • Kanagawa Dental University • Nippon Medical School • Tsurumi University School of Dental Medicine • University of Saskatchewan College of Dentistry (Canada) • Osaka Prefecture University Graduate School of Engineering • Kindai University Faculty of Science and Engineering

